



Smart solutions.
Strong relationships



Drive Panel Solution

Rating: 2.5 A to 293 A

emotron

DEDICATED DRIVE

 A CG Product



SC Industrial Syndicate

Smart drive panel Solutions - based on strong relationships



CG Drives & Automation offers complete drive panels solutions that ensure the safe and cost-efficient operation of demanding industrial applications. We provide drive panel solutions to users, system integrators and OEMs around the world.

Our know-how creates robust and reliable, yet simple drive panel solutions – resulting in optimized cost and a longer service life. Our experience is based on decades of product development and thousands of customer installations – as well as recent advances in control technology.



Quality Manufacturing

Our manufacturing plants in Helsingborg, Sweden and Mandideep, India carry out manufacturing, in-house assembly and testing with short lead times, even for customized solutions. We operate a global supply chain of components, under lean and flexible production methods that are ISO 9001 certified, with our commitment towards “One World One Quality.”

Strong Relationships

We use our personal commitment to make our solutions work according to your requirements. Saving energy is not just about your electricity bill. We let you put your own energy into your core business. We build long-term relationships based on stability and strong ownership – as well as our excellent track record on delivering what we promise.

Quality Products – International Standards

- ISO 9001: 2015 certified factory
- IEC 60529
- IEC 61800 part 2



Service and Support



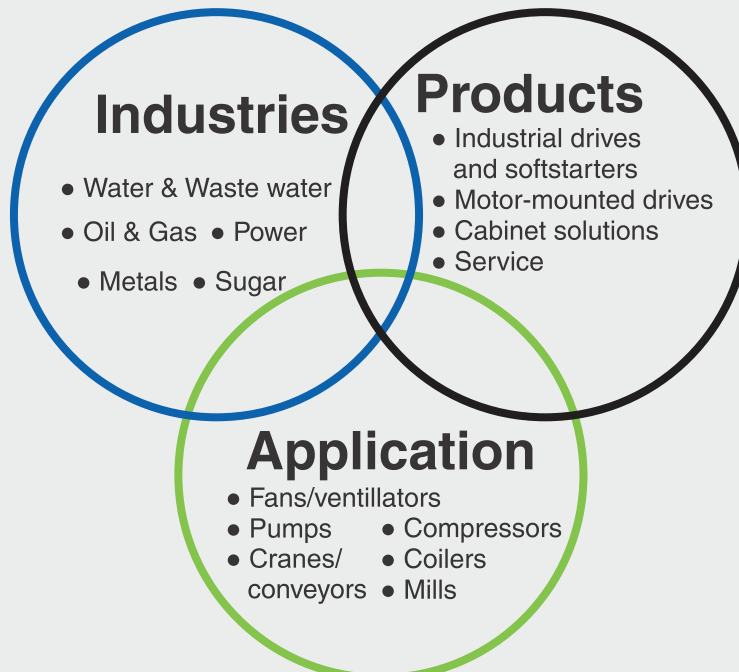
We take full responsibility for our products and solutions, from design to installation, commissioning and maintenance.



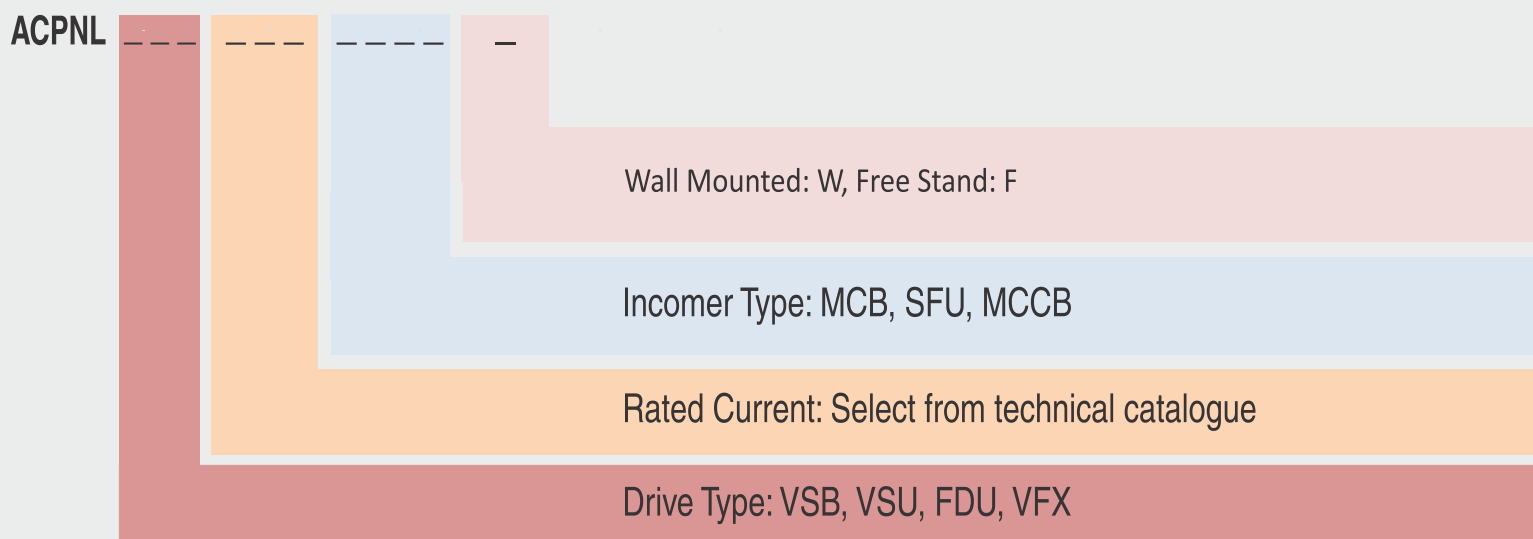
24x7
Support

Our committed professionals are available when you need support. Independent where in the world you are.

Drive Panels for all Industrial Sectors



AC Drive Panel Ordering info:



Consideration

- Incoming Voltage: 3-phase, 415V AC +/-10%,
- Incoming Frequency: 50Hz+/-5%
- Control Supply : 230 VAC
- O/P choke: Optional (Based on cable distance between drive output and motor)
- Wall mounted type enclosure: From 2.5 A to 58 A
- Incomer: MCB, SFU, MCCB
- Panel Ingress Protection: IP42. For higher IP class contact factory.
- Push Button: Start, Stop, E-Stop, Speed Increase, Speed Decrease
- Indicating Lamp: R, Y, B, Drive On, Drive Ready, Drive Trip
- Door mounted PPU
- Digital VAF meter
- Selector Switch: Auto/Manual

Panel Construction

- Each VFD system is enclosed in a separate stand alone panel fabricated using CRCA sheet. The sheet steel used for panel of minimum of 2mm CRCA except the doors and covers made of 1.6mm CRCA. Panels are front access only. Panel is suitable for indoor installation. Undrilled gland plate provided at bottom with panel.
- Louvers/Filters

Vibrant, Compact & Dynamic AC Drives

Emotron VSB Series

Simple to use & suitable for standard applications

S.No.	Heavy Duty Current	Panel Size (HxWxD) mm	Incomer	Drive Type	Ordering Code
1	2.5	600x500x300	MCB	VSB	ACPNLVSB2.5MCBW
2	3.8	600x500x300	MCB	VSB	ACPNLVSB3.8MCBW
3	5.5	600x500x300	MCB	VSB	ACPNLVSB5.5MCBW
4	9	600x500x300	MCB	VSB	ACPNLVSB009MCBW

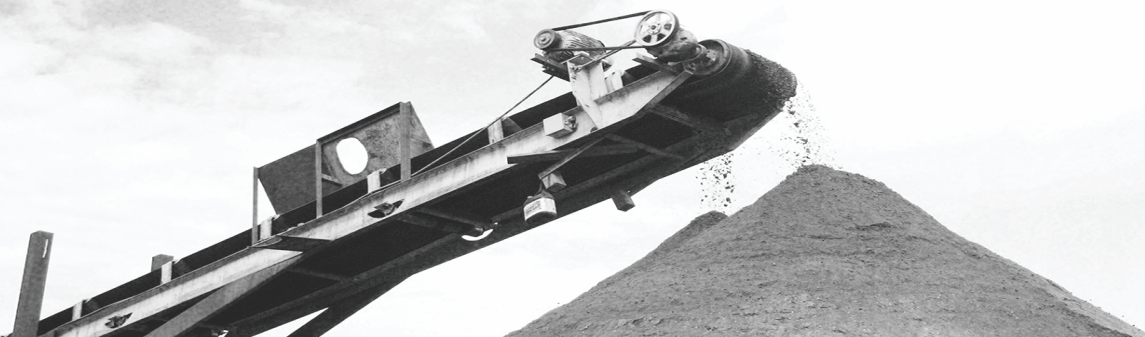


Dynamic Drives For Small AC Motors

Emotron VSU Series

Ordering details for VSU drive with panel:

S.No.	Rated Current	Panel Size(HxWxD) mm	Incomer	Drive Type	Ordering Code
1	3.8	600x500x300	MCB	VSU	ACPNLVSU3.8MCBW
2	4.8	600x500x300	MCB	VSU	ACPNLVSU4.8MCBW
3	8	600x500x300	MCB	VSU	ACPNLVSU008MCBW
4	11	600x500x300	MCB	VSU	ACPNLVSU011MCBW
5	16	600x500x300	MCB	VSU	ACPNLVSU016MCBW
6	21	600x500x300	MCB	VSU	ACPNLVSU021MCBW
7	30	700x500x300	SFU	VSU	ACPNLVSU030SFUW
8	36	700x500x300	SFU	VSU	ACPNLVSU036SFUW



Compact, Robust, Reliable, Engineered Panel Solution



FDU Drives for Variable Torque Applications

Emotron FDU Series

Ordering details for FDU drive with panel:

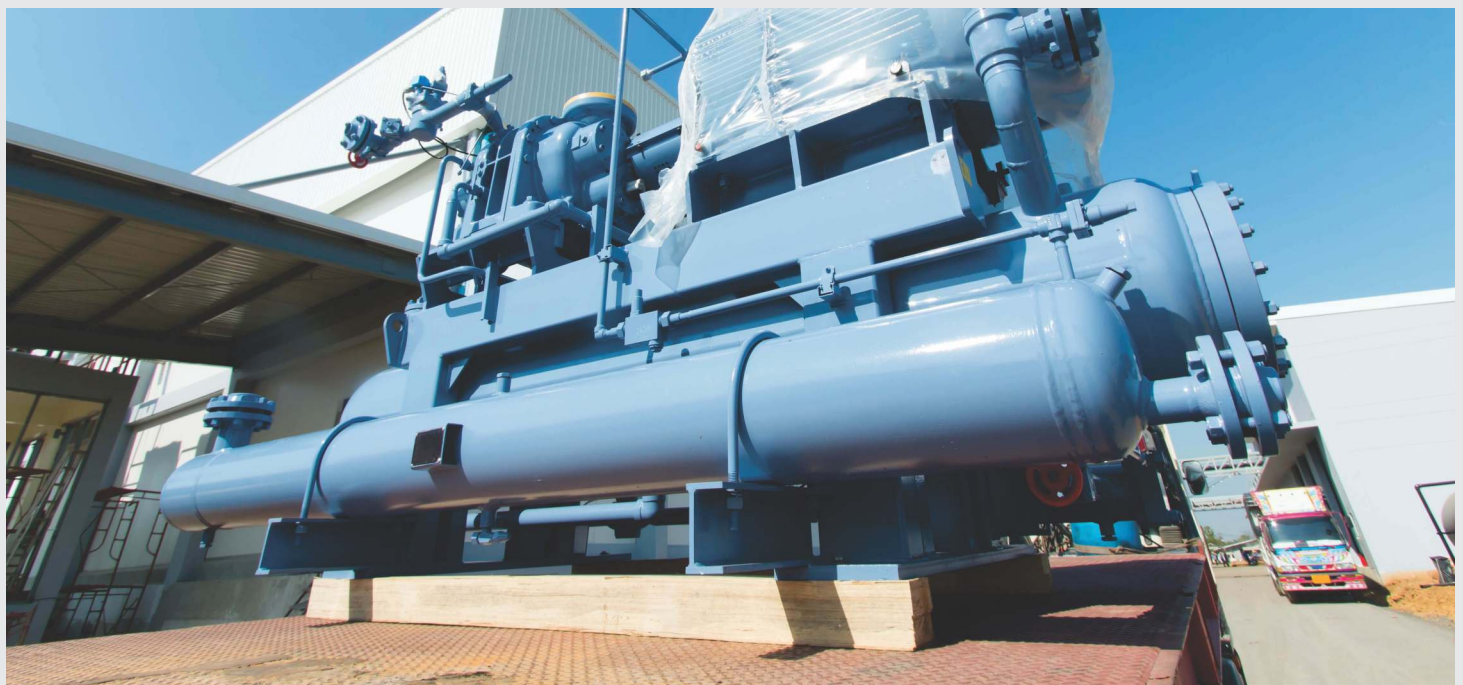
S.No.	Rated Current	Panel Size(HxWxD) mm	Incomer	Drive Type	Ordering Code
1	2.5	1200x600x300	SFU	FDU	ACPNLFDU2.5SFUW
2	3.4	1200x600x300	SFU	FDU	ACPNLFDU3.4SFUW
3	4.1	1200x600x300	SFU	FDU	ACPNLFDU4.1SFUW
4	5.6	1200x600x300	SFU	FDU	ACPNLFDU5.6SFUW
5	7.2	1200x600x300	SFU	FDU	ACPNLFDU7.2SFUW
6	9.5	1200x600x300	SFU	FDU	ACPNLFDU9.5SFUW
7	12	1200x600x300	SFU	FDU	ACPNLFDU012SFUW
8	16	1200x600x300	SFU	FDU	ACPNLFDU016SFUW
9	23	1200x600x300	SFU	FDU	ACPNLFDU023SFUW
10	31	1200x600x300	SFU	FDU	ACPNLFDU031SFUW
11	38	1200x600x300	SFU	FDU	ACPNLFDU038SFUW
12	25	1200x600x400	SFU	FDU	ACPNLFDU025SFUW
13	30	1200x600x400	SFU	FDU	ACPNLFDU030SFUW
14	36	1200x600x400	SFU	FDU	ACPNLFDU036SFUW
15	45	1200x600x400	SFU	FDU	ACPNLFDU045SFUW
16	58	1200x600x400	SFU	FDU	ACPNLFDU058SFUW
17	72	2000x600x600	SFU	FDU	ACPNLFDU072SFUF
18	88	2000x600x600	SFU	FDU	ACPNLFDU088SFUF
19	105	2000x600x600	SFU	FDU	ACPNLFDU105SFUF
20	142	2000x800x600	SFU	FDU	ACPNLFDU142SFUF
21	171	2000x800x600	SFU	FDU	ACPNLFDU171SFUF
22	205	2000x800x600	MCCB	FDU	ACPNLFDU205MCCBF
23	244	2000x800x600	MCCB	FDU	ACPNLFDU244MCCBF
24	293	2000x800x600	MCCB	FDU	ACPNLFDU293MCCBF

APPLICATION

EMOTRON FDU



- 1 Pumps
- 2 Fans
- 3 Compressors
- 4 Blowers



VFX Drives for Dynamic and Constant Torque Applications

Emotron VFX Series



Ordering details for VFX drive with panel:

S.No.	Rated Current	Panel Size(HxWxD)	Incomer	Drive Type	Ordering Code
1	2.5	1200x600x300	SFU	VFX	ACPNLVFX2.5SFUW
2	3.4	1200x600x300	SFU	VFX	ACPNLVFX3.4SFUW
3	4.1	1200x600x300	SFU	VFX	ACPNLVFX4.1SFUW
4	5.6	1200x600x300	SFU	VFX	ACPNLVFX5.6SFUW
5	7.2	1200x600x300	SFU	VFX	ACPNLVFX7.2SFUW
6	9.5	1200x600x300	SFU	VFX	ACPNLVFX9.5SFUW
7	12	1200x600x300	SFU	VFX	ACPNLVFX012SFUW
8	16	1200x600x300	SFU	VFX	ACPNLVFX016SFUW
9	23	1200x600x300	SFU	VFX	ACPNLVFX023SFUW
10	31	1200x600x300	SFU	VFX	ACPNLVFX031SFUW
11	38	1200x600x300	SFU	VFX	ACPNLVFX038SFUW
12	25	1200x600x400	SFU	VFX	ACPNLVFX025SFUW
13	30	1200x600x400	SFU	VFX	ACPNLVFX030SFUW
14	36	1200x600x400	SFU	VFX	ACPNLVFX036SFUW
15	45	1200x600x400	SFU	VFX	ACPNLVFX045SFUW
16	58	1200x600x400	SFU	VFX	ACPNLVFX058SFUW
17	72	2000x600x600	SFU	VFX	ACPNLVFX072SFUF
18	88	2000x600x600	SFU	VFX	ACPNLVFX088SFUF
19	105	2000x600x600	SFU	VFX	ACPNLVFX105SFUF
20	142	2000x800x600	SFU	VFX	ACPNLVFX142SFUF
21	171	2000x800x600	SFU	VFX	ACPNLVFX171SFUF
22	205	2000x800x600	MCCB	VFX	ACPNLVFX205MCCBF
23	244	2000x800x600	MCCB	VFX	ACPNLVFX244MCCBF
24	293	2000x800x600	MCCB	VFX	ACPNLVFX293MCCBF

APPLICATION EMOTRON VFX



- 1 Cranes
- 2 Crushers
- 3 Centrifuges
- 4 Extruders
- 5 Conveyors
- 6 Mills
- 7 Mixers
- 8 Winches
- 9 Winders
- 10 Test benches

